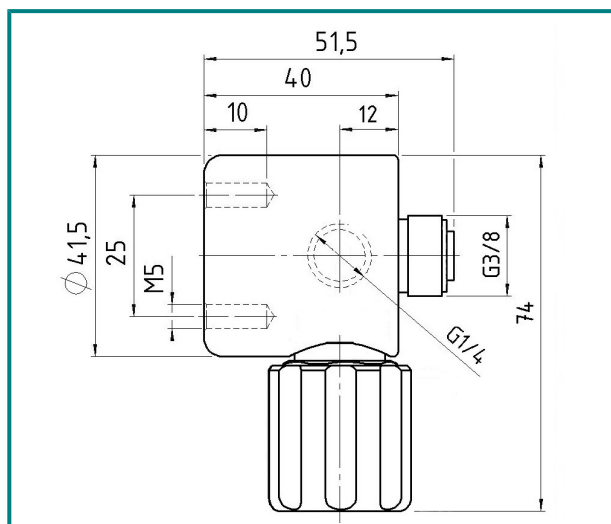


Diaphragm shut-off valve HP 501

- 90° metal diaphragm valve PN 40



Description:

The 90° shut-off valve HP 501 is a shut-off for point of use regulators.

Application area:

The HP 501 is a shut-off valve will be used with pressure regulator HP 410 as a point of use regulator for Laboratory benches and as wall mounting version. HP 501 can be connected with the pipe system from the left, the right and from above.

Accessories:

See total catalogue segment

7. Gauges, screws, compression fittings and accessories

Ordering information:

Material:

HP501 = stainless steel
HP501MS = brass

Option:

06 = compression fitting 6mm
08 = compression fitting 8mm
10 = compression fitting 10mm

HP501-	08	Gas
Type	Option	Gas type

Technical details:

Body:	stainless steel 1.4404 electropolished or brass, nickel and matt chrome plated
Gasket:	PCTFE
Diaphragm:	1.4435
Leakage rate: against atmosphere	10 ⁻⁸ mbar l/s He
Gas purity:	≤ 6.0
Max. Pressure:	40 bar
Operating temp.:	-20°C to +70°C
Weight:	240g
Threads:	inlet G 1/4" f outlet G 3/8" m

Hornung Quality standard

The company Hornung is certified to
DIN EN ISO 9001 and ISO 14001:2009.

All single parts are manufactured, assembled and tested by in-house production.

The finished parts are therefore under all criteria of German quality control with 100% final inspection.

Hornung GmbH
Rathenaustraße 55, 63263 Neu-Isenburg

Phone: +49 6102 7883-70
Fax: +49 6102 7883-40

www.hornung.org
info@hornung.org